



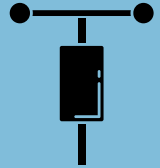
## Electric Resiliency to Ensure Reliability

The threat of wildfire impacts EWEB assets, operations, and customers on a near-annual basis. To address this threat, the utility is testing new equipment, leveraging technology, and incorporating third-party expertise to bolster electric system resiliency to a range of threats, including wildfire.



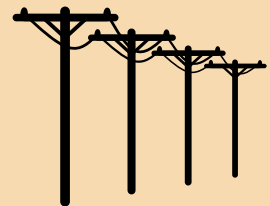
In 2024, EWEB began using satellite and artificial intelligence technology to pinpoint where vegetation management is most needed.

EWEB now has two weather stations to support custom, localized fire weather forecasting.



EWEB is using state-of-the-art fire modeling to refine EWEB's High Fire Risk Zones. The analysis simulated over 11 million wildfire starts under different weather and fuel conditions to show where the greatest public safety risks are located. With input from local fire agencies, this analysis will help prioritize areas for future mitigation work.

New electric equipment in high risk areas to reduce ignition risk and speed outage detection and response.

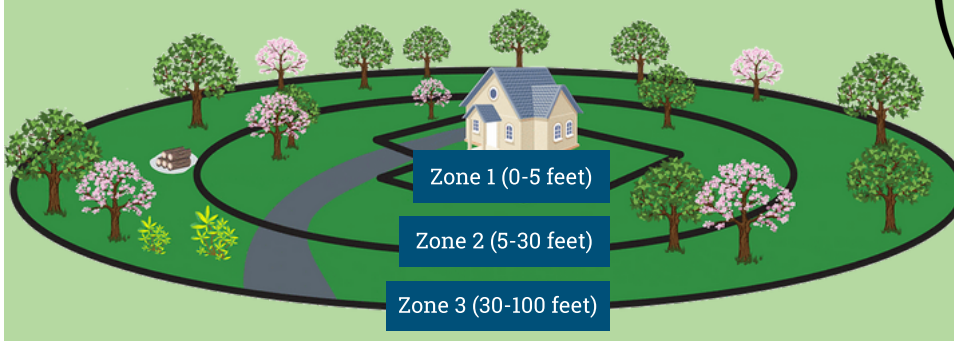


## Wildfire Preparedness... It's a Shared Responsibility.

### Build Defensible Space around your property.

Examples for creating defensible space:

- Zone 1: Remove plants directly under the eaves of your house; leave at least a five-foot gap.
- Zone 2: Store firewood and leftover construction materials at least 30 feet away from your house.
- Zone 3: Trim the lower branches of trees so they don't act as a ladder for fire to reach the treetops.



*SCAN ME*

Scan the QR Code to learn more about wildfire preparedness



# ARE YOU PREPARED?

## Public Safety Power Shutoff (PSPS)

PSPS is an operational practice that an electric utility may use to help prevent wildfires starting or spreading during extreme and dangerous weather conditions. A PSPS means EWEB will proactively turn off power in high-risk areas until weather conditions improve, and is considered an action of last resort to help protect public safety. Currently, **all of the McKenzie Valley service territory** is considered “high risk” and may experience a PSPS during wildfire season.

### How will you be notified?

Whenever possible, EWEB will announce a PSPS 24 hours before the power is scheduled to be turned off.

Ensure you have updated your contact information with EWEB. We will use communication channels, including:

- Email
- Autodial Calls
- News Media
- Social Media
- **NEW!** Physical updates during a PSPS will be available at the McKenzie Fire & Rescue Leaburg Office

Weather events and wildfire situations can be dynamic, so while we will strive for at least a **24-48 hour advance warning, this may NOT ALWAYS be possible.**

### Levels of Notification

#### WATCH

72-48 Hour Notice:  
Forecasted weather conditions  
make a PSPS possible.

#### WARNING

48-24 Hour Notice:  
EWEB is planning and  
will activate a PSPS

#### NOTICE

EWEB has activated a PSPS

#### RESTORED

Signals that power has  
been restored for  
everyone in a PSPS zone.

### How long before power is restored?

Once the immediate threat of wildfire has passed, our crews will visually inspect the power lines to check for any damage or safety concerns before restoring power. As these inspections can only occur during daylight hours, customers should be prepared to be without power for an **extended time** during a PSPS.

Learn more at [eweb.org/wildfire](http://eweb.org/wildfire)