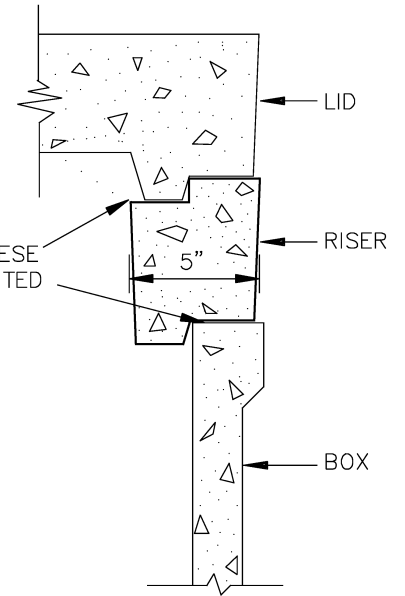
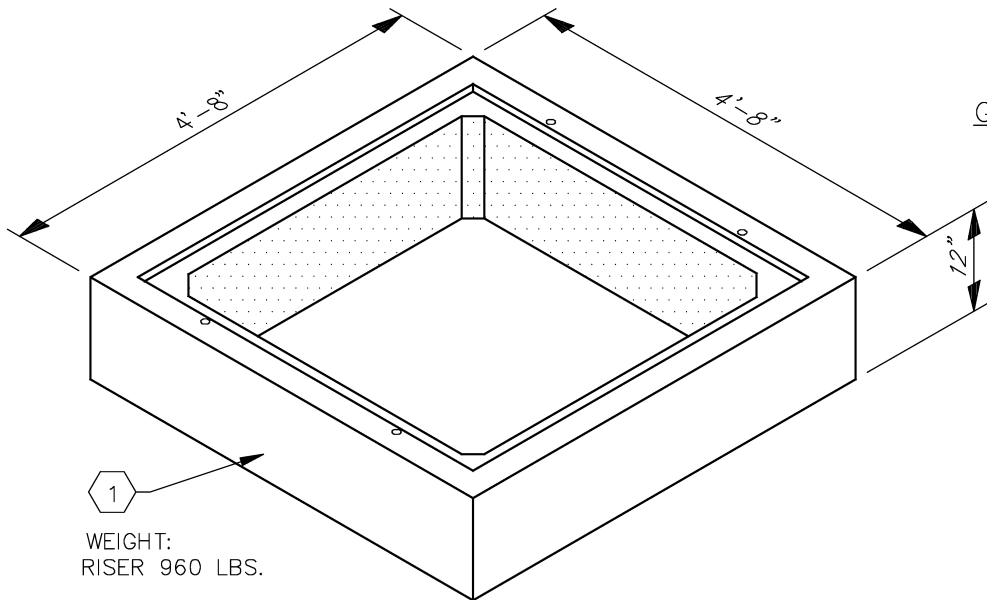


EC5-2.2001



GROUTED JOINT DETAIL



EC5-2.2002

DISTRIBUTION CONSTRUCTION STANDARD  
EUGENE WATER & ELECTRIC BOARD - EUGENE, OREGON

4' 8" X 4' 8" X 6" AND 4' 8" X 4' 8" X 1' CONCRETE RISER SECTION

Approved Mar 16, 2009  
**EC5-2.2000**  
Page 1 of 2

REV.  
**2**

**ASSEMBLY EC5-2.2001**

4' 8" X 4' 8" X 6" CONCRETE RISER SECTION

1. 348-0000480                      1 EA      RISERCONC 4'8"X4'8"X6"

**ASSEMBLY EC5-2.2002**

4' 8" X 4' 8" X 1' CONCRETE RISER SECTION

1. 348-0000481                      1 EA      RISERCONC 4'8"X4'8"X1'

**DESIGN NOTES:**

1. Designed for H20 "Traffic Rated" wheel loading. These risers when used with a traffic rated lid, can be located in roadways, alleys, driveways, truck parking areas, fire truck access locations and airport vehicle traffic areas. These risers are NOT designed for any size of "Aircraft" wheel loading and SHALL NOT be located in these areas.

**REFERENCE STANDARDS:**

A) Refer to EC5-2.1100 for 4' 8" x 4' 8" concrete vault assembly.

B) Refer to Specification ES5-2.1100.01A for EWEB Stock code # 348-0000480.

C) Refer to Specification ES5-2.1100.01B for EWEB Stock code # 348-0000481.