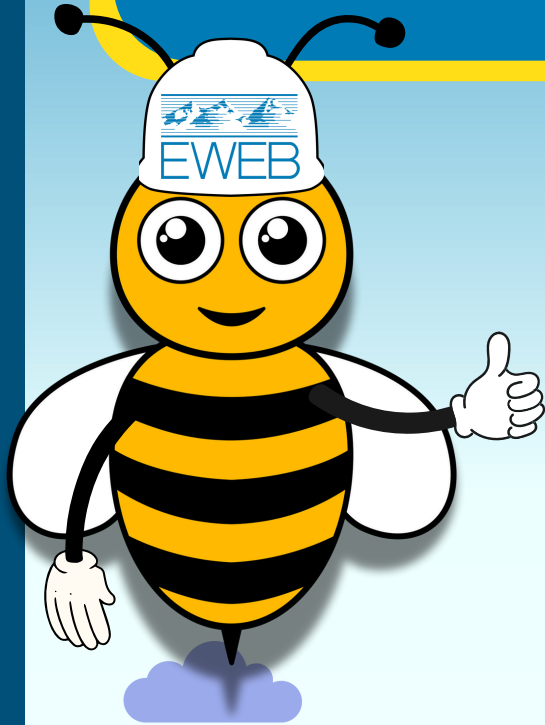


BRAIN BOOSTING



POWER LINE SAFETY PUZZLES



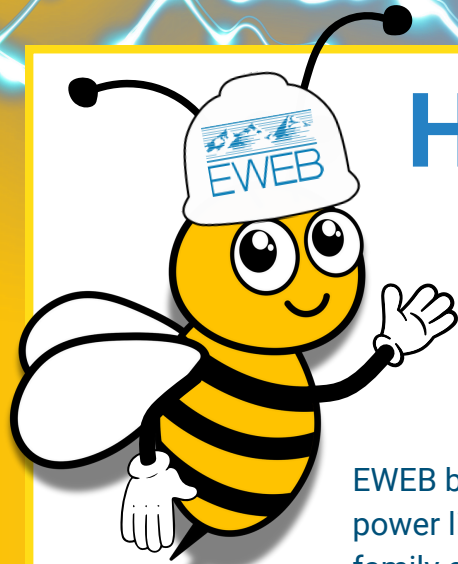
INSIDE:

TOP 3 LINE SAFETY QUESTIONS
LINE SAFETY VOCABULARY

**STUMP A
GROWN UP!**

**STOP.
OBSERVE.
SURVIVE.
CALL 911**





Hi Kids! I'm Buzzby!

I work at the Eugene Water & Electric Board or EWEB for short. Everyone at EWEB is buzzing around to power your town!

EWEB brings electricity from far away through power lines to your home so that you and your family can be comfortable and safe.

There are many power lines and electric equipment all around your town. Did you know there are even power lines under the ground? At EWEB, we want you to know how to be safe around power lines and electric equipment. Can you answer my **TOP 3 LINE SAFETY** questions? Don't worry if you don't know them all. This booklet is full of information about power line safety.

1. Can you tell if a power line is energized?

☐ Yes ☐ No

No. There's no way to tell if a power line is energized. You should assume every power line is energized and stay far away!

2. Do you know what to do if you see a power line on the ground?

☐ Yes ☐ No

If you see a power line touching the ground or touching anything else like a fence then you should STOP, OBSERVE, SURVIVE. Don't get any closer. You should find someone who can call 911 to report it.

3. Should you play on the big green transformer boxes?

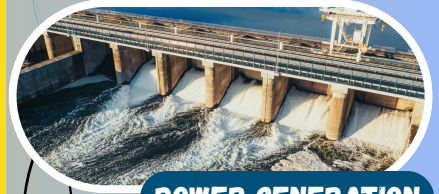
☐ Yes ☐ No

No. The big green boxes you see near sidewalks can be dangerous because they have energized electric equipment inside the box. These are called Padmount Transformers.



How does
ELECTRICITY get
to your home?

FOLLOW THE MAZE TO FIND OUT!



POWER GENERATION



TRANSMISSION LINES



SUBSTATION



DISTRIBUTION LINES



HOME!

Draw a line to connect the vocabulary word to the correct definition.

1. **Electric Shock & Electrocutation**

2. **Conductor**

3. **Insulator**

4. **Line Technician**

5. **Energized**

6. **Padmount Transformer**

7. **Penguin Shuffle**

A. This will happen if a person touches electricity. It may cause injury or death.

B. A career where people fix electric problems on power poles, lines and transformers.

C. A material that allows electricity to flow through it like water.

D. A material that does not allow electricity to flow through it like rubber .

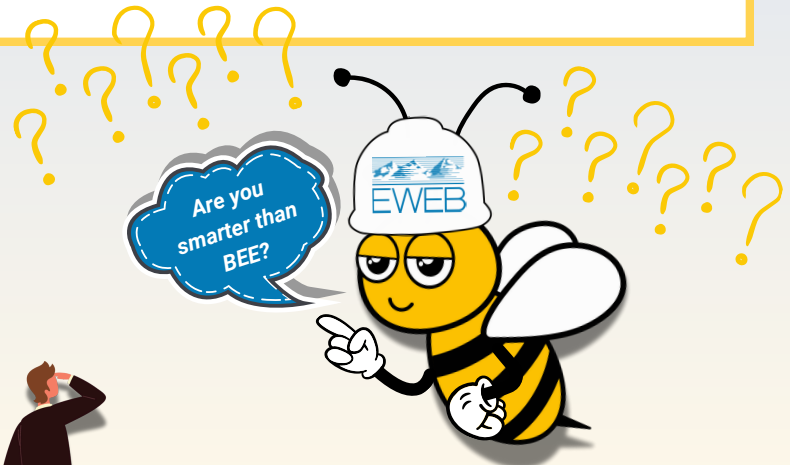
E. A large green box on the side of the street that has electric equipment inside it. It is not safe to play on.

F. Keeping your feet close together, you walk away from a dangerous power line. Walking this way limits your exposure to electricity ripples that can cause shock.

G. When power is flowing through a conductor.

I-A, 2-C, 3-D, 4-B, 5-G, 6-E, 7-F

Circle all the images that match what you should do if you see a downed power line.



STOP. OBSERVE. SURVIVE. Call 911.
Did you circle everything that matches?

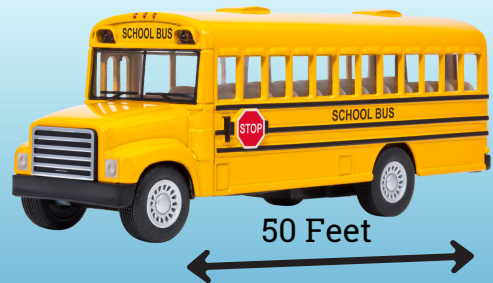
STUMP A GROWN-UP



- 1.** If a power line is on your vehicle and you are inside, what should you do?
- A. Get out of the vehicle
 - B. Stay inside the vehicle and call 911
 - C. Read a book

- 2.** True or False? If you see a power line touching the ground or something else, you should stay at least 50 feet away or the length of a school bus.

- 3.** How fast does electricity travel?
- A. 75 miles per hour - as fast as a cheetah!
 - B. 600 miles per hour - as fast as a plane!
 - C. 186,000 miles per second - as fast as light!



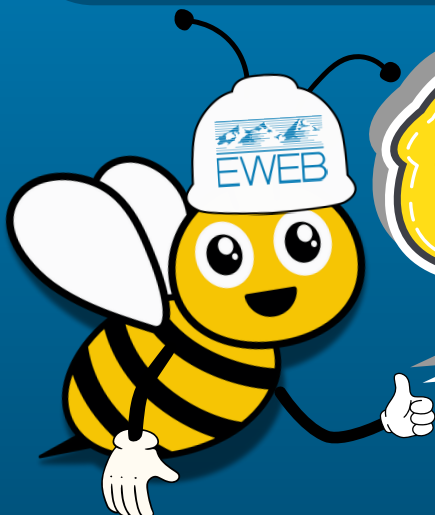
- 4.** True or False? If you see a downed power line, there's no way to tell if it is energized, and you should ALWAYS call 911 to report it.

- 5.** Remember these 3 words to stay safe:
- A. STOP. OBSERVE. SURVIVE.
 - B. GREEN. RED. YELLOW.
 - C. EAT. SWIM. YELL.

BONUS

- 6.** An adult should do this before digging in the ground:
- A. Call 811 - there are power lines underground!
 - B. Smell the dirt.
 - C. Eat a sandwich and take a nap.

1=B, 2=TRUE, 3=C,
4=TRUE, 5=A, 6=A



Congratulations!
You are a....

LEARN MORE ABOUT ELECTRIC
SAFETY AT EWEB.ORG

