

SIDE PRUNING

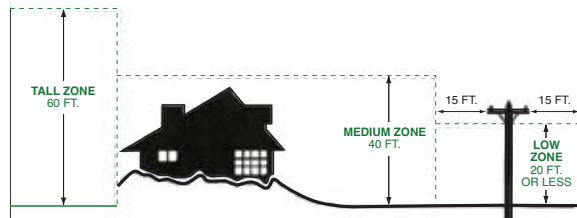
Side pruning consists of cutting back or removing side branches.

Over time, these trees will be healthier, will live longer, and will require less frequent pruning, reducing maintenance costs. More examples can be found by visiting www.eweb.org (go to the “outages and safety” section).

Right tree, right place

EWEB encourages homeowners and landscapers to plant the “right tree in the right place.” Plant only species near or under power lines that will never grow large enough to conflict with wires. Consult a tree specialist or visit www.eweb.org, for a list of acceptable species.

Sometimes, replacement is the most logical choice. When appropriate, EWEB will remove a tree and provide a voucher to purchase



Proper selection and placement of trees minimizes the need for utility pruning.

a new, more appropriate species for the location. EWEB does not remove trees without a property owner’s permission.

Never attempt to remove or trim a tree that has power lines running through it. If you need tree trimming or removal assistance, please call EWEB Tree Trimming at 484-2411 Ext. 2054.

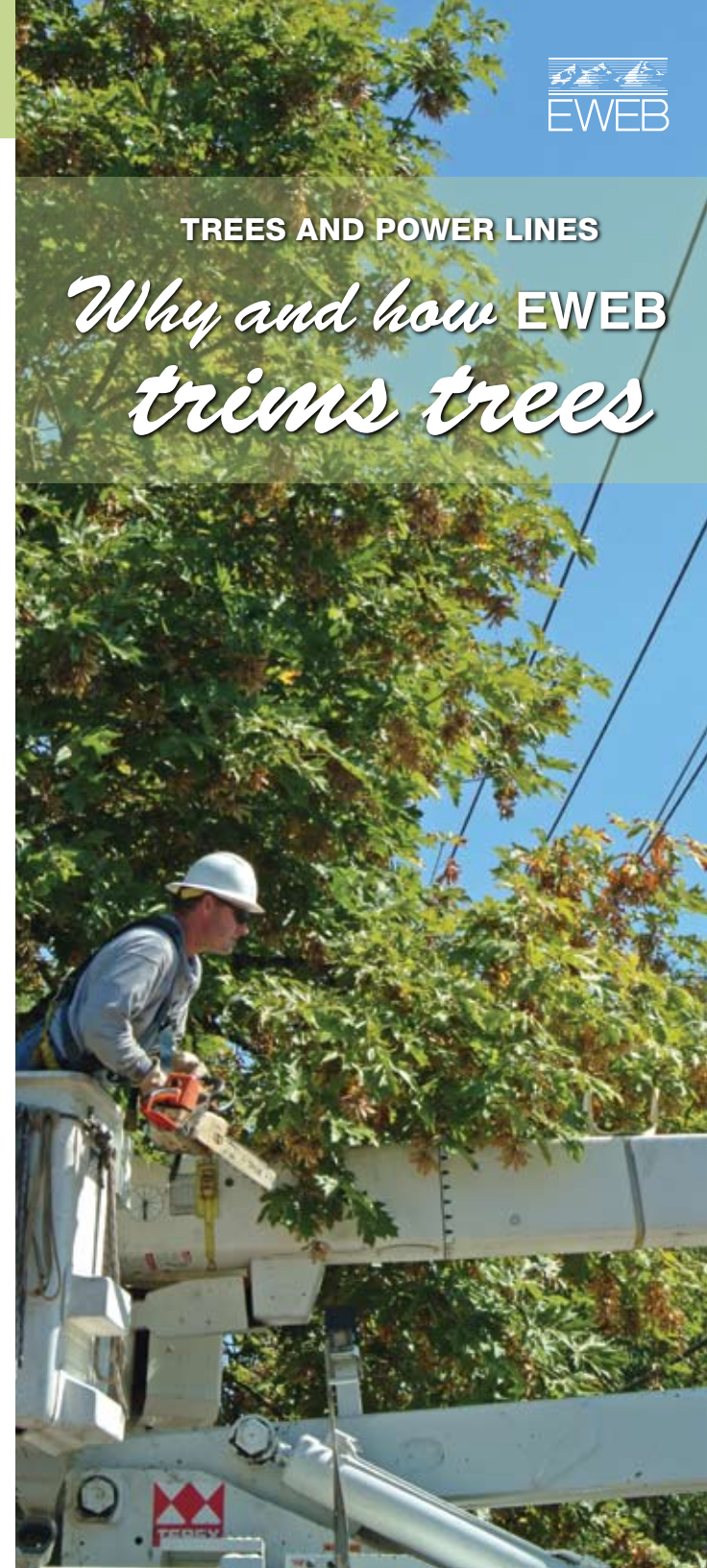
Rely on us.



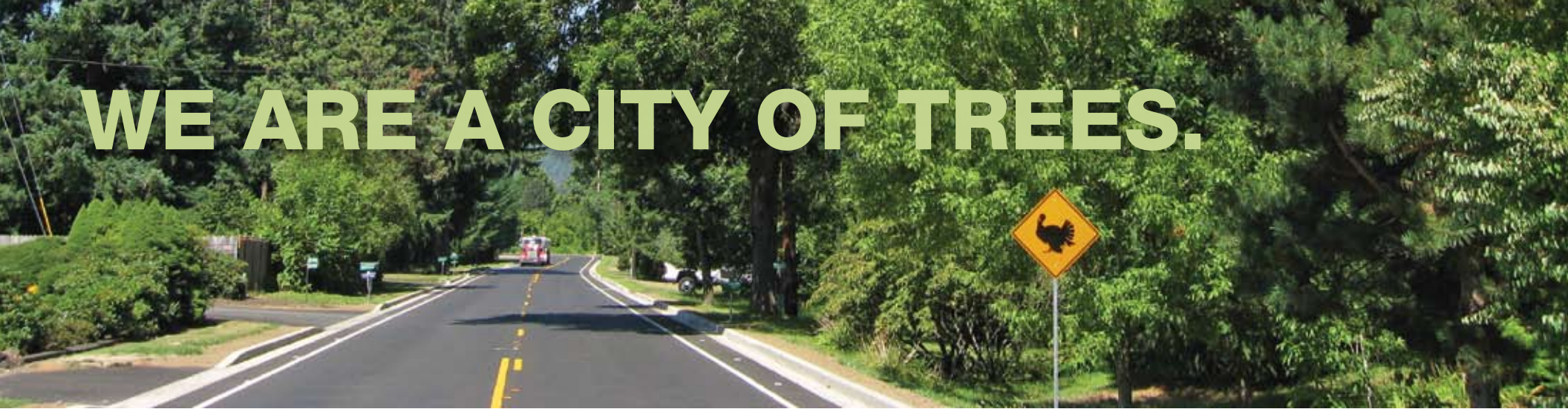
Eugene Water & Electric Board
 500 East 4th Avenue
 Eugene OR 97440-2148
 (541) 484-2411
www.eweb.org

TREES AND POWER LINES

Why and how EWEB trims trees



WE ARE A CITY OF TREES.



Trees are a source of beauty, shade our homes, reduce noise and increase property values. We also are a society that depends on electricity to heat and light our homes, schools and offices.

Sometimes, our love of trees and our reliance on electricity conflict. Simply put, trees growing too close to overhead power lines must be cut back because they can threaten your safety or cause power outages. The Eugene Water & Electric Board has developed a tree-trimming program that is sensitive to the public's desire for a lush urban tree canopy. We can have reliable power and still be known as a "City of Trees."

Why we trim trees

Like all other utilities, EWEB trims trees to ensure the delivery of reliable power. We comply with Oregon Public Utility Commission and National Electric Safety Code rules governing the amount of clearance needed around electrical wires and other facilities. Trimming reduces outages during storms and lowers maintenance costs over time.

We're also concerned about your safety. Water, sap and chemicals in trees can be conductors of electricity. Branches that come into contact with electric wires can be dangerous, resulting in injury or death.

How we trim trees

EWEB and most other utilities now use pruning techniques that meet the American National Standards Institute (A300) standards

and are recommended by the International Society of Arboriculture (and other organizations) as the correct form of trimming around higher-voltage power lines.

These national standards and techniques utilize what are known as "lateral or directional" pruning methods. Basically, vertical tree stems and horizontal branches that conflict with wires are cut back to where the branches meet the trunk or to a larger "parent" branch that is not directed toward the wires. Here are a couple of examples:

V-PRUNING

V-pruning involves cutting back portions of a tree's upper crown, creating space for overhead power lines.

