


What to do if your power GOES OUT

EWEB Electric Outage Hotline:

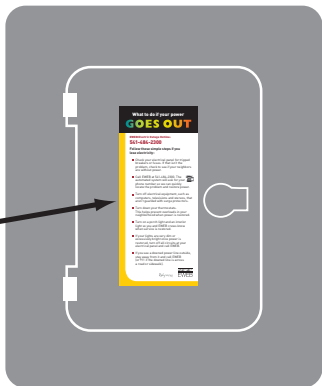
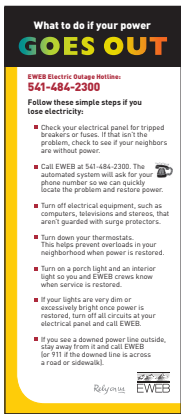
541-484-2300

Follow these simple steps if you lose electricity:

- Check your electrical panel for tripped breakers or fuses. If that isn't the problem, check to see if your neighbors are without power.
- Call EWEB at 541-484-2300. The automated system will ask for your phone number so we can quickly locate the problem and restore power. 
- Turn off electrical equipment, such as computers, televisions and stereos, that aren't guarded with surge protectors.
- Turn down your thermostats. This helps prevent overloads in your neighborhood when power is restored.
- Turn on a porch light and an interior light so you and EWEB crews know when service is restored.
- If your lights are very dim or excessively bright once power is restored, turn off all circuits at your electrical panel and call EWEB.
- If you see a downed power line outside, stay away from it and call EWEB (or 911 if the downed line is across a road or sidewalk).

Rely on us.





BREAKER PANEL

Attach to
breaker panel.

As a quick and easy reference,
place this important information
on the outside of your
breaker panel or
near your telephone.

