



Eugene Water & Electric Board Commercial Small Business Lighting 2012 Program Information

If you have less than 5,000 Watts of interior lighting then this is the program for you!

EWEB promotes energy efficiency by offering business customers a cash rebate to help replace existing lighting with energy-efficient lighting at little or no cost.

The Small Business Lighting program is a streamlined way to apply for a cash rebate when you upgrade to energy efficient lighting. By participating in the program, you can reduce your energy costs with new and improved lighting. EWEB also benefits from the work by delaying the cost of new generation and distribution equipment. We invite you to join us in saving energy and money by following these basic steps.

1. You are interested in improving the energy efficiency of the lighting in your Building AND YOUR CONNECTED ELECTRICAL LIGHTING LOAD IS LESS THAN 5,000 WATTS:

- Call EWEB Energy Management Services to verify your eligibility.
- Call your Contractor or Supplier.
- Ask to participate in EWEB's Energy Smart Small Business Lighting Rebate Program.
- You work with your contractor or supplier to install the most efficient-lighting.
- Use EWEB's Small Business Lighting Rebate Application to determine the rebate amount.

2. Install the Energy-Efficient Lighting

- Lighting retrofit for the facility should be a comprehensive installation, and include all the light fixtures.

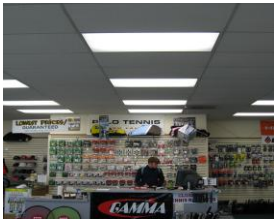
3. Upon Job Completion:

- Sign the completed [EWEB Rebate Application](#) signifying that your choice of energy-efficient lighting has been installed.
- Submit the application with a copy of the receipts to EWEB for payment. Upon approval, EWEB will pay the rebate.
- EWEB will perform an on-site inspection to verify equipment installation.
- Enjoy the benefits of energy cost savings and the reliability of new equipment.

Note: EWEB continues to provide a custom analysis program for lighting and other energy conservation measures that offer cash incentives and low interest loans. Visit our website at www.eweb.org for more information on additional rebate programs available for your business. If you have further questions, please contact our Energy Management Services Department at 541-685-7000.



Rely on us.



Eugene Water & Electric Board Commercial Small Business Lighting Catalog 2012

If you have less than 5,000 Watts of interior lighting, then this is the program for you!

EWEB promotes energy efficiency by offering business customers a cash rebate to help replace existing lighting with energy efficient lighting at little or no cost. The facilities existing electrical interior lighting load must be less than 5,000 Watts, be a comprehensive installation, and include all light fixtures to qualify for the listed rebate amounts. For products not in this catalog, refer to the Retrofit Catalog for EWEB Codes and rebate amounts. Rebates totaling over \$1,500 require pre-approval before installation.

LED

Light Emitting Diode (LED) downlight module or fixture must replace existing fixture of at least 40 Watts. Integral LED lamp must replace incandescent lamp of existing wattage listed below.



LED products must be on one of these lists to qualify for EWEB incentives:

LED Lamp Lists
[Energy Star LED Light Bulbs](#)
[LDL LED Lamp List](#)

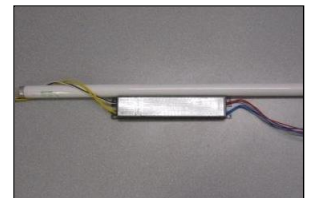
LED Fixture Lists
[Energy Star Qualified LED Lighting](#)
[Design Lights Consortium Commercial Fixtures](#)
[LDL LED Fixtures and Tubes List](#)

The process for qualifying an LED product is verified through the Lighting Design Lab (LDL) Northwest Regional Utilities [LDL LED Products Lists](#).

EWEB Code	Existing Equipment	Retrofit or Replace Existing Fixture With:	Rebate Per Unit	Typical Annual Savings
LR055	40 to 100 Watt	LED Downlight 15 Watt maximum	\$50	\$15
LR060	PAR38 90 Watt	PAR 38 LED 18 Watt maximum	\$30	\$22
LR065	PAR30 75 Watt	PAR 30 LED 15 Watt maximum	\$25	\$18
LR070	PAR20 50 Watt	PAR 20 LED 8 Watt maximum	\$20	\$11
LR075	MR16 35 Watt	LED MR16 7 Watt maximum	\$15	\$9
LR076	MR16 50 Watt	LED MR16 10 Watt maximum	\$20	\$13
LR080	A19 60-75 Watt	LED 17 Watt maximum	\$15	\$10
LR085	A19 60-75 Watt	L-Prize 10 Watt maximum	\$20	\$12

HIGH PERFORMANCE T8 – 4' LAMPS

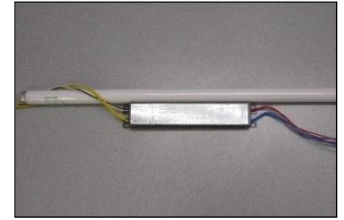
Replace existing 4' F40 T12 lamps and magnetic ballasts with high efficiency electronic ballasts and high lumen 32 Watt lamps. System wattages must not exceed maximum wattages listed below. New lamps and electronic ballasts must be listed on CEE commercial lighting products list at www.cee1.org. Manufacturer's model number for high performance lamps and ballasts must be listed on both the back of the application form and the project invoice, or product specification sheets must be submitted with rebate application.



EWEB Code	Existing Equipment	Retrofit or Replace Existing Fixture With:	Rebate Per Unit	Typical Annual Savings
LS030	4' F40T12 with 1 lamp	High Performance T8 System less than 30 Watts	\$40	\$3
LS040	4' F40T12 with 2 lamp	High Performance T8 System less than 50 Watts	\$45	\$7
LS050	4' F40T12 with 3 lamp	High Performance T8 System less than 75 Watts	\$50	\$11
LS060	4' F40T12 with 4 lamp	High Performance T8 System less than 100 Watts	\$55	\$14

STANDARD T8 FLUORESCENT TO HIGH PERFORMANCE T8

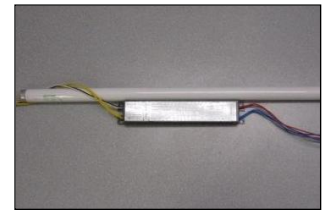
Replace standard 32 Watt T8 lamps with reduced wattage 25-28 Watt lamps. Replace existing T8 electromagnetic or electronic ballasts with high efficiency low ballasts factor electronic ballasts. System wattages must not exceed maximum wattages listed below. New lamps and electronic ballasts must be listed on CEE commercial lighting products list at www.cee1.org. Manufacturer's model number for high performance lamps and ballasts must be listed on both the back of the application form and the project invoice, or product specification sheets must be submitted with rebate application.



EWEB Code	Existing Equipment	Retrofit or Replace Existing Fixture With:	Rebate Per Unit	Typical Annual Savings
LS170	4' F32T8 lamp	Reduced Wattage F32T8/28W lamp only	\$1	\$1
LS175	4' F32T8 lamp	Reduced Wattage F32T8/25W lamp only	\$2	\$1
LS180	4' F32T8 with 2 lamps	High Performance T8 System less than 50 Watts	\$18	\$3

HIGH PERFORMANCE T8 – 8' LAMPS

Replace existing 8' F96 T12 lamps and magnetic ballasts with high efficiency electronic ballasts and high lumen 32 Watt lamps. System wattages must not exceed maximum wattages listed below. New lamps and electronic ballasts must be listed on CEE commercial lighting products list at www.cee1.org. Manufacturer's model number for high performance lamps and ballasts must be listed on both the back of the application form and the project invoice, or product specification sheets must be submitted with rebate application.



EWEB Code	Existing Equipment	Retrofit or Replace Existing Fixture With:	Rebate Per Unit	Typical Annual Savings
LS070	8' F96T12 with 1 lamp	High Performance 4' T8 System less than 50 Watts	\$45	\$8
LS080	8' F96T12 with 2 lamps	High Performance 4' T8 System less than 100 Watts	\$55	\$10
LS085	8' F96T12 with 2 lamps HO	High Performance 4' T8 System less than 160 Watts	\$80	\$22

EXIT SIGNS

New exit signs must be Light Emitting Diode (LED), Electroluminescent or Cold Cathode type, and replace existing incandescent or fluorescent signs. New signs must use 5 Watts or less, and meet all code requirements. No retrofit kits are allowed.



EWEB Code	Existing Equipment	Replace Existing Fixture With:	Rebate Per Unit	Typical Annual Savings
LS090	Incandescent or fluorescent Exit Sign single or double face	New sign LED, 5 Watts or less	\$60	\$15

INTERIOR HIGHBAY FLUORESCENT

New HPT8, T5, or T5HO linear fluorescent fixtures replace existing one for one 400 Watt high intensity discharge fixtures. New T8 lamps and electronic ballasts must be listed on CEE commercial lighting products list at www.cee1.org. Manufacturer's model number for high performance lamps and ballasts must be listed on both the back of the application form and the project invoice, or product specification sheets must be submitted with rebate form. T5 and T5HO fixtures must have programmed start ballasts. New fixture must not exceed maximum wattages listed below. New fixtures with individual occupancy sensors qualify for sensor rebate under Lighting Controls.



EWEB Code	Existing Equipment	Replace Existing Fixture With:	Rebate Per Unit	Typical Annual Savings
LS120	400 Watt Interior HID	New 250 Watt or less High Performance T8, T5, or T5HO Fluorescent	\$200	\$50

INTERIOR LIGHTING CONTROLS

Replace manual switched lighting with automatic controls, which include occupancy sensors or automatic time switches. Occupancy sensors can be passive infrared, ultrasonic, or dual technology. Wall switch sensors shall replace standard wall switches. Automatic time switches must control lighting circuits, and switch off lights based on time of day. Switches that control exterior lighting must be equipped with an astronomical feature. Rebate amounts are based on wattages of lighting load controlled.



EWEB Code	Existing Equipment	Replace Existing Control With:	Rebate Per Unit	Typical Annual Savings
LS130	Manual Switch	Occ. Sensor: < 300 Watt controlled load	\$50	\$10

Eugene Water & Electric Board

Energy Efficient Rebates

Commercial Application Instructions 2012

Eugene Water & Electric Board's Commercial rebates are available to business customers with a commercial meter who install qualifying energy efficient equipment. Please refer to the appropriate product catalog for information on product specifications including energy efficiency requirements, rebate amounts, and product codes.

APPLICATION INSTRUCTIONS

1. Read the product specifications for the item(s) in the corresponding catalog for which you are applying. The catalog will detail the requirements for the qualifying products.
2. Purchase and install qualifying product(s) between January 1, 2012 and December 31, 2012. Unless pre-approval is required, qualifying products must be installed before submitting the Application.
3. Complete the [Application Form](#) – page 1.
 - a. Customer Information - page 1, section 1. Print your business name as it appears on your EWEB bill, address information, telephone, and e-mail address. Provide the installation address and contact information.
 - b. Facility Information – page 1, section 1. Provide facility address, specific building use, square footage and weekly hours of operation (**Typical Building Type/Hours Per Week:** Church 42; Convenience Store 125; Hotel/Motel Commons 169; Hotel/Motel Guest Rooms 29; Industrial – Lg 169; Industrial 2 Shifts 125; Manufacturing 1 Shift 58; Office Building 54; Restaurant 77; Retail (Food) 112; Retail (Non Food) 87; Shopping Strip Mall 92; Warehouse 69; Other Spaces = Estimated hours/wk x 52)
 - c. Payment Release Authorization - page 1, section 2. Payee must fill out all required fields including payee name, mailing address, and contact information. Include Social Security/Tax ID information and Tax Status information. If this section is not filled out completely, we cannot process the rebate payment.
 - d. Customer Signature - page 1, section 3. Please read the Customer Certification statement and put a check mark in all of the boxes above the signature line. Read the Terms and Conditions on the Application Form page 2, section 4 and sign your acceptance on page 1, section 3. By signing the form, you are verifying that all of the information is true and you are confirming payment arrangements.
4. Rebate Product Information - page 2, section 5 of the Application Form. Complete all required fields, including EWEB Code Number, Manufacturer, and Ballast/Model Number. Multiply the number of units (A) by the rebate per unit (B), and put the total in column C. Complete that process for every line item and enter the total rebate in the bottom section of the corresponding table.
 - a. If you are submitting an HVAC Equipment Replacement rebate application, make sure the correct HVAC Worksheet(s) is included. Make sure to carry over the total rebate amount from the worksheet to the corresponding table on the application form.
 - b. If you are submitting a New Construction Lighting or New Construction HVAC rebate application, make sure there has been a worksheet completed and submitted for pre-approval before the job has been completed. If there was any additional equipment installed or if there were any changes in the equipment installed, please complete a new worksheet with the additional/changed equipment noted. Make sure the total rebate amount is carried over from the worksheet to the corresponding table on the application. Note: new construction rebates will not be paid unless there has been a pre-approved worksheet submitted before the job was completed.
 - c. If you are submitting a lighting rebate, please read the [Commercial Lighting Requirements](#) to verify all products qualify.
 - d. If you are submitting a lighting rebate, make sure there has been a [Lighting Waste Disposal Form](#) completed and submitted.
5. Mail, email or fax the completed Application Form and other required documentation with proofs of purchase (including an itemized invoice) to: business.rebates@eweb.org or Fax#541-685-7676 or mail to Eugene Water & Electric Board, EMS Commercial at P.O. Box 10148, Eugene, Oregon 97440. If you have any questions about this process please log on to www.eweb.org or call Energy Management Services at 541-685-7000.



Rely on us.

Eugene Water & Electric Board Energy Efficient Rebates Commercial Application Form 2012

Complete this Application and attach the corresponding worksheet along with the final invoice.

SECTION 1	CUSTOMER INFORMATION	
Facility Name	Facility Address Where Equipment Was Installed	Weekly Hours of Operation
Building Use (Specify: office, retail, restaurant, etc.)	Gross (total) Sq. Footage	Heated/Cooled Sq. Footage
Name of Contact Person	Title of Contact Person	
Phone	Fax	E-mail Address (for EWEB use only)
Mailing Address		City, State, Zip

SECTION 2	PAYMENT RELEASE AUTHORIZATION		
Make check payable to:			
Payee: Individual/Business Name	Contact Name	Phone Number	
Payee Mailing Address	City	State	Zip
Tax Status: <input type="checkbox"/> Individual/Sole Proprietor <input type="checkbox"/> Corporation <input type="checkbox"/> Limited Partnership <input type="checkbox"/> LLC <input type="checkbox"/> Government <input type="checkbox"/> Non-Profit Corporation <input type="checkbox"/> General Partnership <input type="checkbox"/> Other			
Tax ID Number: <input type="checkbox"/> <input type="checkbox"/> <input type="checkbox"/> <input type="checkbox"/> <input type="checkbox"/> <input type="checkbox"/> <input type="checkbox"/> <input type="checkbox"/> <input type="checkbox"/> <input type="checkbox"/> Employer Identification Number <input type="checkbox"/> Social Security Number			
<small>Tax Liability: Rebates may be taxable if greater than \$600 and will be reported to the IRS unless you are exempt. The Eugene Water & Electric Board will show rebates as income to you on the IRS Form 1099 unless you have checked "Corporation" or "Exempt" as your tax status above. You are urged to consult your tax advisor concerning the taxability of rebates. The Eugene Water & Electric Board is not responsible for any taxes, the payment of those taxes, or their applicability that may be imposed on you or your business as a result of receipt of this rebate.</small>			

SECTION 3	CUSTOMER SIGNATURE		
<small>Customer Certification: As a qualified Eugene Water & Electric Board (EWEB) general service customer, I certify that I have purchased and installed energy-saving products, according to the program terms and conditions, for use in my business facility. I understand that the issuance of this rebate by EWEB is to promote energy conservation and is based solely on the potential energy savings that may be obtained from using such equipment. This rebate in no way implies any ownership or the acceptance of any liability by EWEB for the products or equipment or makes any implied warranty of the products, their installation, or the desired results. I understand that I am responsible for any necessary permits that may apply to the installation of these products and the proper disposal of any and all removed materials and equipment.</small>			
<small>I certify the attached documents to this rebate Application are authentic proof of purchase by me or my authorized business representative(s) for the referenced herein. I also certify that the information on this Application and the attached documentation is true and accurate. Upon reasonable notification, I agree to allow EWEB to verify both the sales transactions and the product installation at my facility. I understand that incentives are taxable and may be reported to the IRS. I understand that the rebate check will go to the payee listed in Section 2.</small>			
<small>Rebate applications must be submitted to EWEB no later than December 31, 2012. Mail application to: EWEB Energy Management Services, PO Box 10148, Eugene, OR 97440 or email to business.rebates@eweb.org or fax to 541-685-7676.</small>			
<input type="checkbox"/> Yes, I understand the corresponding worksheet must be completed and attached (if applicable).			
<input type="checkbox"/> Yes, I understand there must be a copy of the final invoice for this project attached.			
<input type="checkbox"/> Yes, I have read and comply with the terms and conditions (Section 4) on the back of this form.			
<input type="checkbox"/> Yes, I have read and comply with Application Instructions.			

SIGN HERE X		Date: / /
----------------------------	--	--------------------

(Please print and sign your name in ink)



Rely on us.

